

ACID CLEANING KIT (P/N 523103)

FOR INTELLICHLOR® SALT CHLORINE GENERATORS

WARNING



Working with muriatic acid can be dangerous. Always wear rubber gloves and eye protection, and work in a well ventilated area, when cleaning the SCG cell.

ALWAYS add acid to water. **NEVER** add water to acid. Splashing or spilling acid can cause severe personal injury and/or property damage.

REMOVE SCG CELL FROM PLUMBING

1. **Disconnect all power to the filter pump, automation controls and SCG at the main breaker.**

WARNING

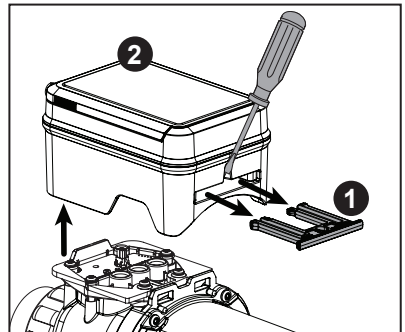
STORED CHARGE - Wait a minimum of sixty (60) seconds before servicing.

2. **Open the filter air relief valve and stand clear until all pressure has been relieved and the pressure gauge reads 0 (zero) psi.**
3. Disconnect the SCG cell from the power center/pack.
4. Using a flat blade screwdriver, gently pry the *Retaining Clip (1)* from the *Controller Assembly (2)*.
5. Gently lift the *Controller Assembly (2)* from the cell and place it aside.

NOTICE

Shifting or shimmying the Controller Assembly side to side during removal may damage connection terminals. Only lift upwards.

6. Remove the SCG cell from the system plumbing.



- Continue to next page -

ACID CLEAN THE CELL BLADES

WARNING

Working with muriatic acid can be dangerous. Always wear rubber gloves and eye protection, and work in a well ventilated area, when cleaning the SCG cell. ALWAYS add acid to water. NEVER add water to acid. Splashing or spilling acid can cause severe personal injury and/or property damage.



1. In a plastic bucket, create 4:1 water-to-acid solution. Refer to the table below for recommended volumes.

MODEL	WATER	ACID
LT15 / LT25 / PLUS30	0.8 qt. [0.8 L]	27 oz. [200 mL]
PLUS 40 / PLUS 60	1.5 qt. [1.4 L]	47 oz. [350 mL]

CAUTION

Never use undiluted acid! Failure to dilute acid will permanently damage the cell.

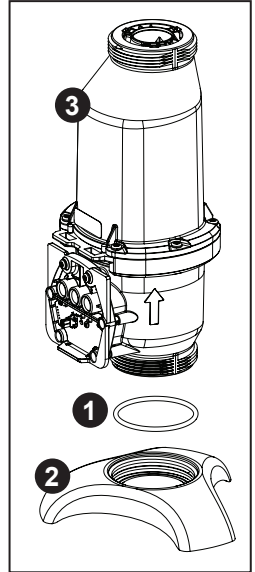
2. Ensure the *Stand O-ring* (1) is properly seated in the *Acid Wash Stand* (2).
3. Thread the *Acid Wash Stand* (2) onto the *Cell Inlet* (3).
4. Place the Stand onto a level and stable surface.
5. Carefully pour the acid solution into the SCG cell until the cell blades are fully submerged.

Note: If the acid solution is spilled or comes in contact with the outside of the SCG cell or cleaning stand, thoroughly rinse acid off the surfaces.

NOTICE

Never submerge the SCG cell. Submerging the cell in acid can cause permanent damage.

6. The solution will begin to rigorously bubble/foam and dissolve scale buildup.
Note: If rigorous foaming does not occur, the blades may not require cleaning.
7. Allow the blades to soak in the solution until bubbling/foaming has stopped. **Do NOT leave acid in the SCG cell for more than 30 minutes. Excessive acid washing will damage the blades.**
8. Pour the acid solution back into the plastic bucket and rinse the inside of the SCG cell thoroughly with clean water.
9. Inspect the cell blades for remaining scale buildup.
 - **If scale is still visible:** Repeat the process. Additional acid may need to be added to the solution.
 - **If blades are clean:** Continue to next step.
10. Thoroughly rinse the outside of the SCG cell, acid wash stand and stand O-ring.
11. Reinstall the Controller Assembly onto the SCG cell.
12. Reinstall the SCG cell into the plumbing.



All indicated Pentair trademarks and logos are property of Pentair. Third party registered and unregistered trademarks and logos are the property of their respective owners.

© 2025 Pentair. All rights reserved. WWW.PENTAIR.COM



P/N 17900 REV. C 3/19/25